



American Recovery and Reinvestment Act (ARRA) 2009 *Economic Stimulus*

San Antonio-Bexar County MPO
Transportation Policy Board
March 23, 2009

San Antonio MPO

American Recovery & Reinvestment Program (ARRP)

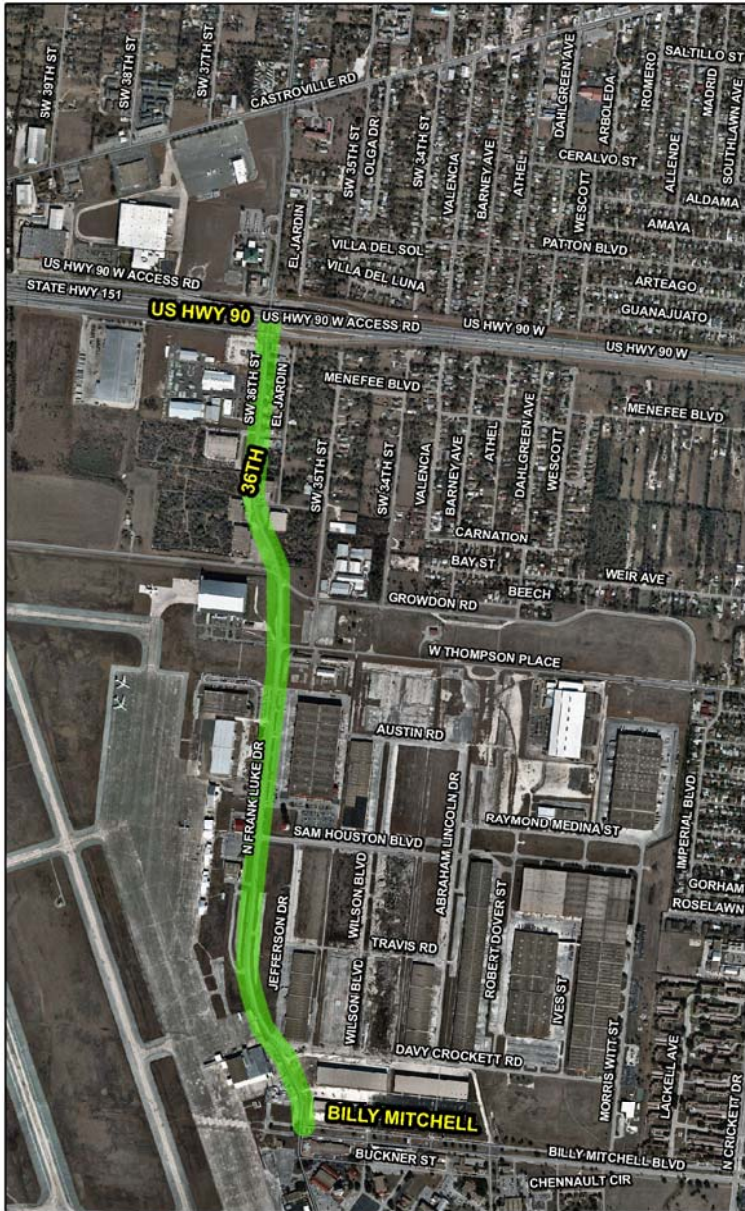
	PROJECTS	OPTION 1 (millions)	OPTION 2 (millions)	COMMENTS
A	US 281 / Loop 1604 Interchange (4-Non-Toll connectors with managed lane connection options)	\$140	\$140	-
B	Loop 1604 at Randolph AFB (FM 78 to Graytown)	\$10	\$10	\$4 million (STP-MM) By MPO
C	36 th Street (US 90 to Billy Mitchell)	\$16.5	-	\$5.4 million (Fed. Demonstration)
D	IH 10 (Loop 1604 to Huebner)	\$40	-	-
E	Wurzbach PKWY (Blanco to West)	\$32	-	\$11 Million (Local Bonds)
F	Wurzbach PKWY (Jones-Maltsberger to Wetmore)	\$33	-	
G	US 281 N Operational Improvements	\$8	-	-
	Total Project Costs	\$279.5	\$150	-
	Commission ARRP Contribution	\$237.5	\$130	-
	Local ARRP Contribution	\$42	\$20	-
	Total Contributions	\$279.5	\$150	-
	Agency Transportation ARRP Priorities	\$0	\$22	-
	TOTAL ARRP Dollars	\$279.5	\$172	-



Next Steps

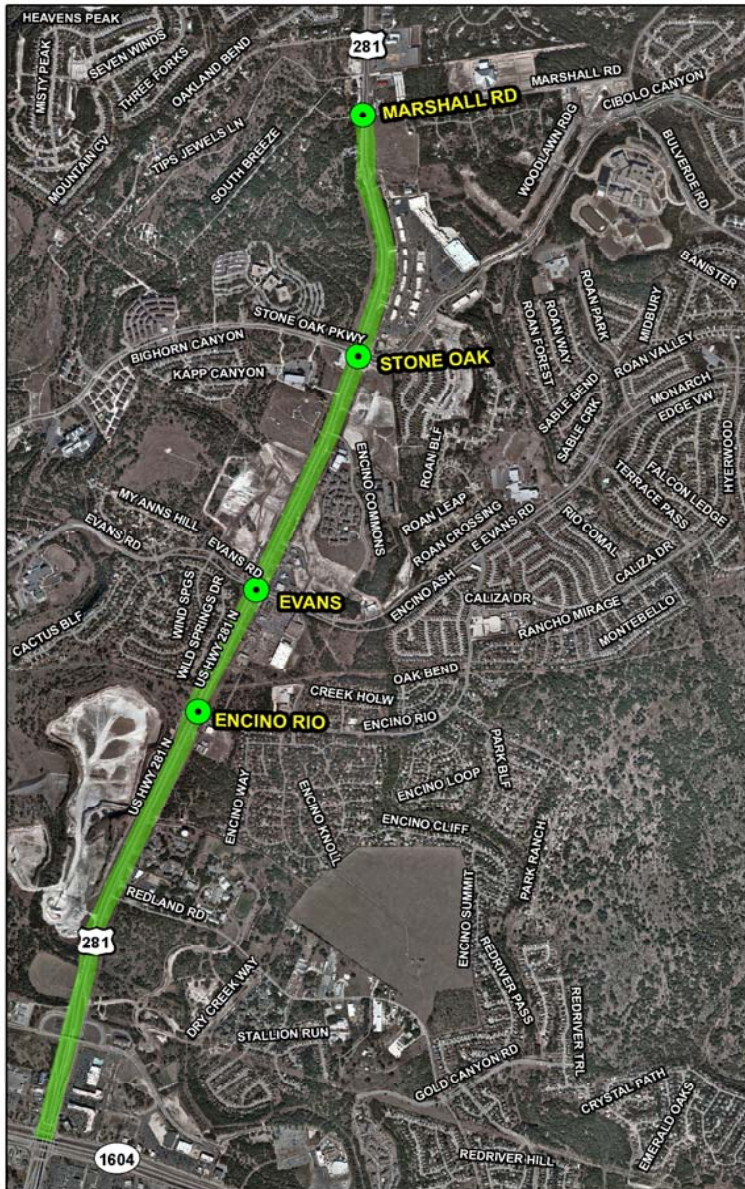
- Need to select projects with the MPO's direct allocation balance of \$22.9 million
 - Selected projects must be amended into the MTP and TIP
 - Projects must be obligated by March 2010
- Agency Workgroup met on March 13th to formulate recommendation (Bexar County, AACOG, TxDOT, VIA, CoSA, RMA and MPO)

36th Street (US 90 to Billy Mitchell)



- **\$16.5 Million**
 - \$4.50 M CoSA
 - \$12.00 M Port SA
- Extends/Diverts 36th Street east of the property
 - Provides direct access to the airfield
 - Improves cargo transport
 - Provides greater economic development opportunities for the Port and the region

US 281 Superstreet



- **\$8 Million**
- Provides operational improvements for US 281 (*Not a long-term solution*)
 - Fits in existing right-of-way
 - Improves safety
 - Increase the throughput of the corridor by 30%
 - Improves traffic flow
 - Maintains existing commercial access
 - Meets Federal criteria

Workgroup Recommendation

Project	ARRA Funds	ATD Funds	Total
36 th Street	\$16.50 M	\$0	\$16.50 M
US 281 Superstreet	\$6.40 M	\$1.60 M	\$8.00 M
Total	\$22.90 M	\$1.60 M	\$24.50 M

Alternate Recommendation

Project	ARRA Funds	ATD Funds	CoSA	Total
Jones Maltsberger	\$0.50 M	\$0 M	\$0 M	\$0.50 M
Salado Creek (I & II)	\$0.66 M	\$0 M	\$0 M	\$0.66 M
Eagleland	\$0.75 M	\$0 M	\$0 M	\$0.75 M
Low Water Crossings	\$0.55 M	\$0 M	\$0 M	\$0.55 M
36 th Street	\$14.74 M	\$0 M	\$0 M	\$14.74 M
US 281 Superstreet <i>(Underfunded by \$200K)</i>	\$5.70 M	\$1.60 M	\$0.50 M	\$7.80 M
Total	\$22.90 M	\$1.60 M	\$0.50 M	\$25.00 M

Back-up Projects



- Agency workgroup has formulated a list of back-up projects in case any issues arise with selected projects
- List includes remaining projects not selected by the Texas Transportation Commission, VIA's BRT project as well as maintenance projects from CoSA and Bexar County
- List totals \$148.6 Million