



IH 35 NE CORRIDOR

MPO POLICY BOARD BRIEFING

June 22, 2009



PROJECT: IH 35 BRIDGE @ WALTERS STREET, WALTERS STREET AND IH 35 IMPROVEMENTS

LIMITS FROM: New Braunfels Avenue
TO: AT&T Center Parkway

Construction Bid: \$22.6 Million (Category 2 & Category 12)

Construction Letting: January 2008

Estimated Construction Completion: January 2010



PROJECT: WALTERS STREET (City of San Antonio)

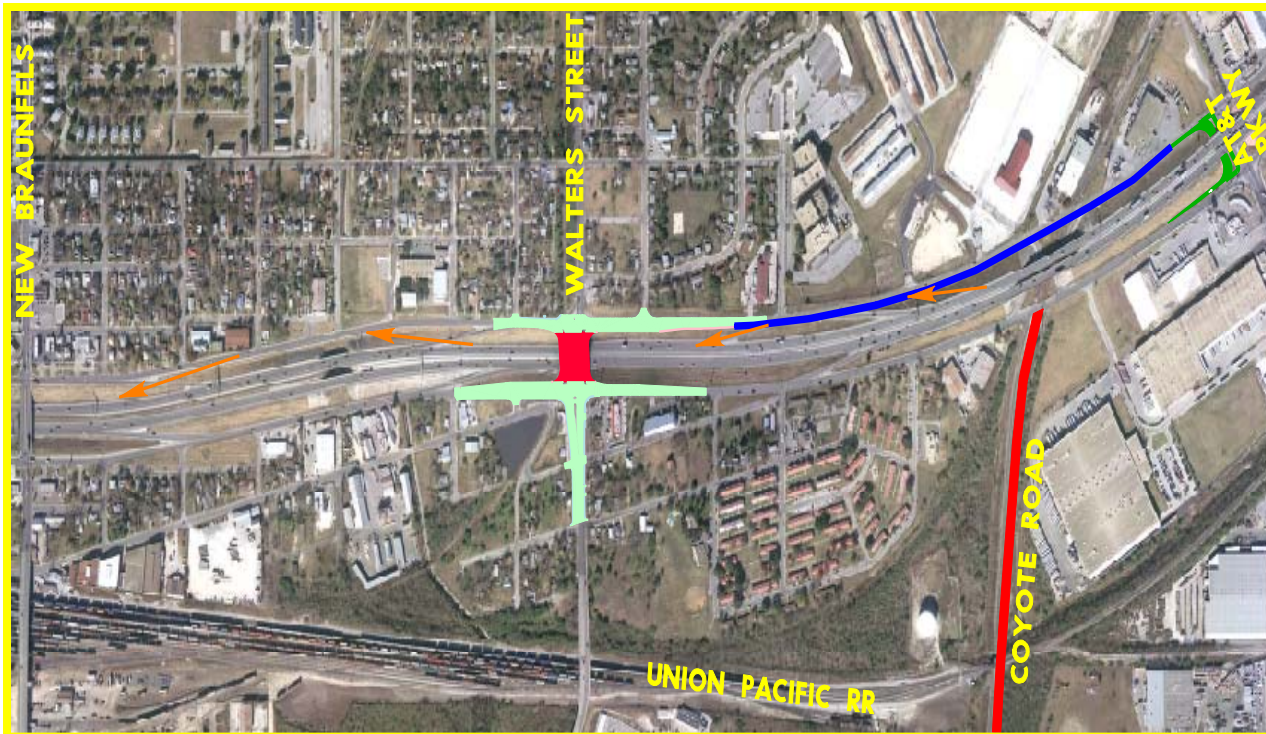
LIMITS FROM: IH 35
TO: Fort Sam Houston

Construction Estimate: \$12.2 Million
And **ROW**

Construction Letting: January 2010
for Construction



PROJECT: IH 35 BRIDGE @ WALTERS STREET AND IH 35 IMPROVEMENTS



IMPROVEMENTS:

- Replace Walters Street Bridge
- Rehabilitate and Reconfigure SB Ramps
- New North to South Turnaround at AT&T Pkwy
- Expand 4 to 6 lanes on Walters Street
- Improve Base access at Jadwin Road



PROJECT: IH 35 BRIDGE @ WALTERS STREET AND IH 35 IMPROVEMENTS

Rendering of Proposed Walters Street Bridge at Street Level

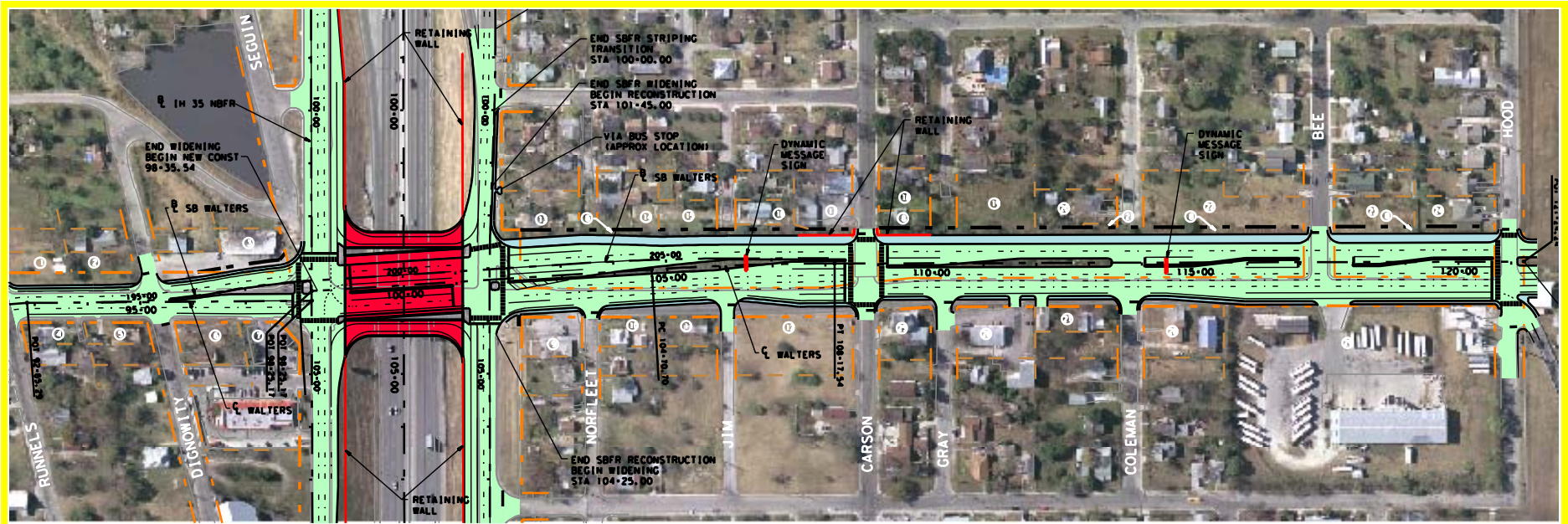


Rendering of Proposed Walters Street Bridge at Main Lanes Level



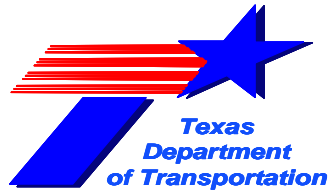


PROJECT: WALTERS STREET SCHEMATIC IH 35 to Fort Sam Houston



IMPROVEMENTS:

- 4 lanes inbound / 2 Lanes outbound
- Pedestrian/Bicycle Amenities
- Replace I-35 Bridge with “Signature Bridge”
- Widening occurs toward abandoned RR ROW



PROJECT: IH 35 / IH 410 FRONTAGE ROAD IMPROVEMENTS

LOCATIONS: IH 35/IH 410 Frontage Road Operational and Drainage Improvements
From: Old Seguin
To: Binz Engleman

IH 35 Frontage Road Southbound Right Turn Lanes
- Binz Engleman
- George Beach
- Petroleum

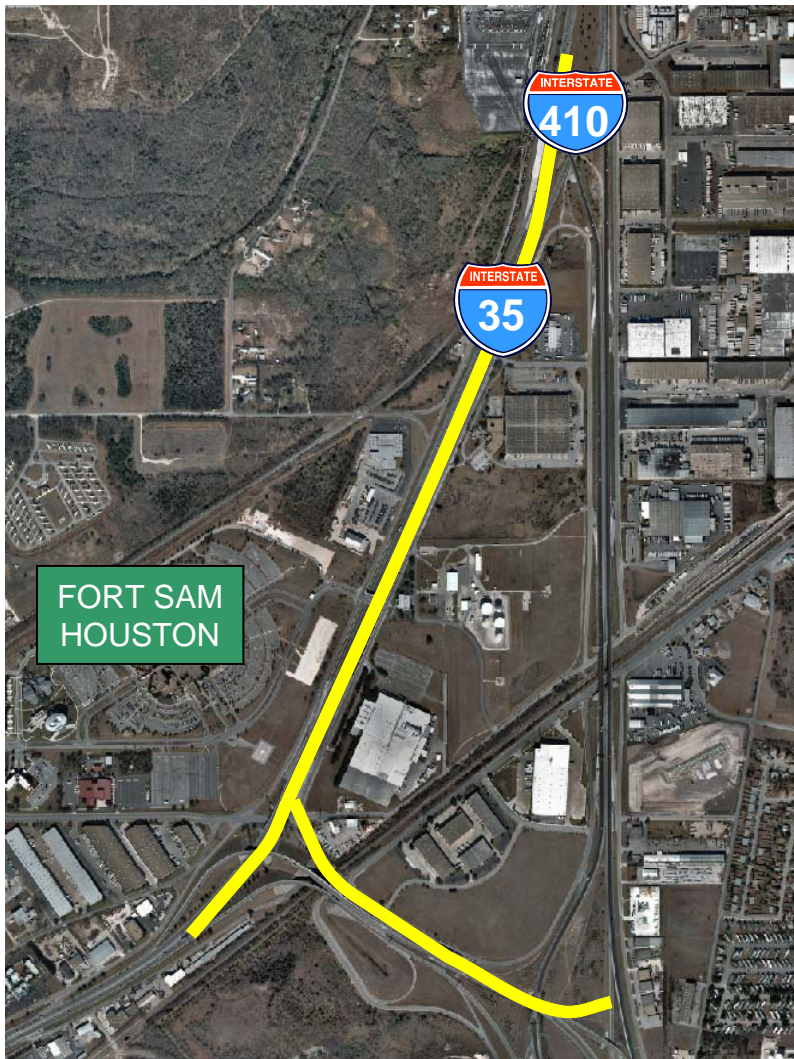
IH 35 NB to SB
Rittiman Road Turnaround

Construction Bid: \$3.66 Million

Construction Completion: August 2009



PROJECT: IH 35 / IH 410 FRONTAGE ROAD IMPROVEMENTS



IMPROVEMENTS:

- Turnaround at Rittiman
- New right turn lanes at Ft. Sam at
Petroleum
George Beach
Binz Engleman
- Restripe dual left turns at
BAMC Bridge
- Widen 2 to 4 lanes on Binz
Engleman and UPRR



PROJECT: IH 410 Rehabilitation

LIMITS FROM: North of FM 1346
TO: IH 35 NB Connector

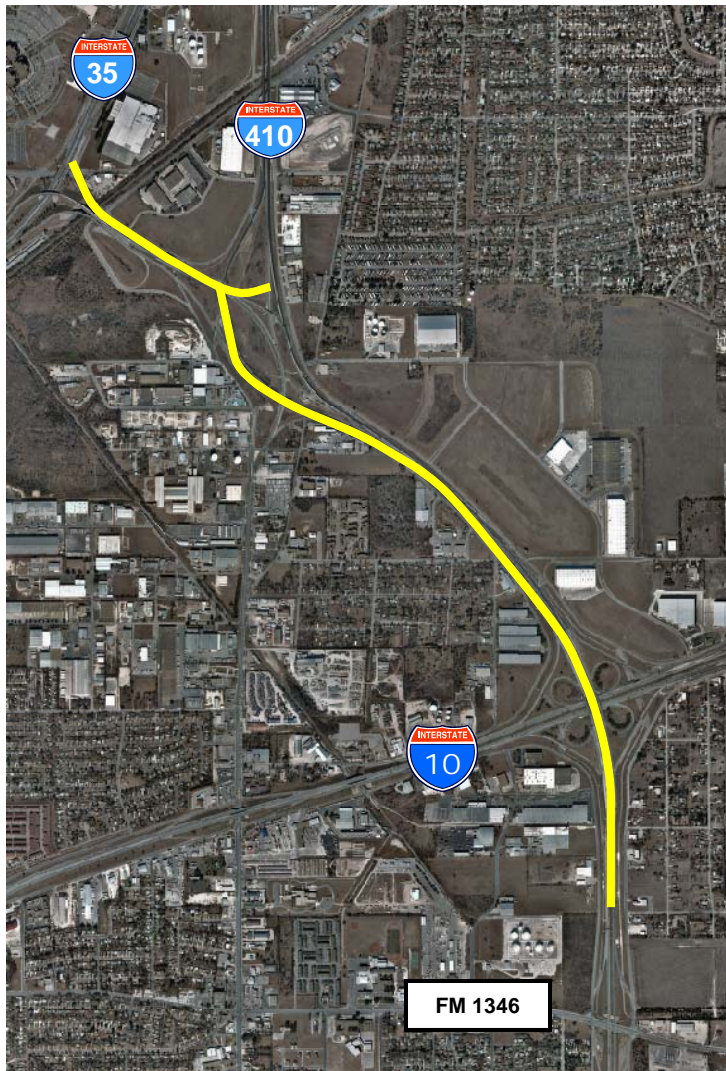
Construction Bid: \$12.4 Million

Construction Letting: October 2005

Construction Completed: March 2009



PROJECT: IH 410 Rehabilitation



IMPROVEMENTS:

- Rehab Existing Mainlanes
- Reconstruct Shoulders
- Bridge Widening



PROJECT: IH 35 IMPROVEMENTS AT WALZEM

LIMITS

From: 0.1 miles South of FM 1976 (Walzem)

To: IH 410 N

Construction Bid: \$9.5 Million

Estimated Construction Completion: June 2009



PROJECT: IH 35 IMPROVEMENTS AT WALZEM



IMPROVEMENTS:

- Rehabilitate
- Reconfigure Northbound Ramps



PROJECT: IH 35 IMPROVEMENTS AT SH 218/PAT BOOKER

LIMITS

From: At SH 218

Construction Bid: \$6.6 Million

Estimated Construction Completion: May 2009



PROJECT: IH 35 IMPROVEMENTS AT SH 218/PAT BOOKER



IMPROVEMENTS:

- Reconfigure Interchange



IH 35 NE Corridor

Estimated Cost for Improvements: \$ 3.5 billion (Unfunded)

